

C 102

Control valves

Downstream stabilisers with two pilots

Technical Data Sheet



Description

The control valves C 102 controls and maintains a preset reduced downstream pressure regardless of variations in demand and upstream pressure (the setting of downstream pressure is always below the upstream pressure). Equipped with two identical pilot valves. The addition of a second pilot allows uninterrupted working while servicing one of the pilots or ease the change of a different pressure pilot setting. Equipped with check valves, it closes automatically in case of backflow (C102C). It allows the maintenance of a pilot while working.



C 102

Control valves - Downstream stabilisers with two pilots

DN mm	PN	PFA in bar	PS				Cat	Ref.	Weight* Kg
			L1	L2	G1	G2			
40	10/16/25	25	25	25	x	x	4.3	149B001364	12
50	10/16/25	25	25	25	x	x	4.3	149B001365	13
65	10/16/25	25	25	25	x	x	4.3	149B10206N	21
80	10/16/25	25	20	25	x	x	4.3	149B10208N	26
100	10/16	16	16	16	x	x	4.3	149B10210N	39
125	10/16	16	16	16	x	x	4.3	149B10211N	59
150	10/16	16	16	16	x	x	4.3	149B10212N	73
200	10	10	10	10	x	x	4.3	149B10214N	122
250	10	10	10	10	x	x	I	149B10215N	208
300	10	10	10	10	x	x	I	149B10216N	328
200	16	16	10	16	x	x	4.3	149B034310	122
250	16	16	10	16	x	x	I	-	208
300	16	16	10	16	x	x	I	-	328
100	25	25	20	25	x	x	4.3	149B001371	39
125	25	25	16	25	x	x	4.3	-	59
150	25	25	13	25	x	x	4.3	149B047279	73
200	25	25	10	25	x	x	4.3	-	122
250	25	25	10	25	x	x	I	-	208
300	25	25	10	25	x	x	I	-	328

* Weight of valve alone

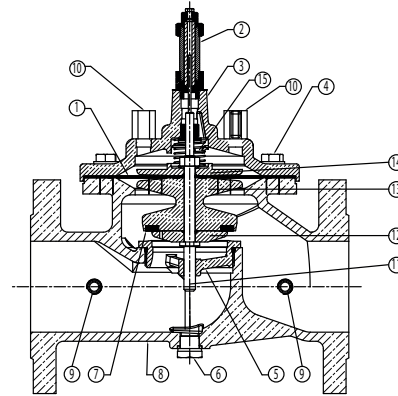
Important notice :

The indicated pressure for the different categories of fluids (L1/L2/G1/G2) is under no condition a guarantee of use. Therefore, it is essential to validate the use of products under given operating conditions.

Technical features	
Operating temperature	-10 to 80°C, for temperatures over 80°C consult us
Upstream pressure	Mini. : 1 bar / Maxi. : 25 bar (see table above)
Connection	DN 40 to 300 mm : with flange PN (see table above) DN 1"1/2 : threaded F/F
Mediums	Clear water 2 mm
Vertical mounting	In optional

Nomenclature and materials

N°	Description	Materials
1	Membrane	EPDM / Polyamide
2	Position indicator with purge	Brass and stainless steel
3	Valve head high pressure	Ductile iron / Epoxy Int/Ext
4	Nuts and bolts	Stainless steel
5	Removable streamlined	Stainless steel
6	Body drain plug	Brass
7	Reversible seal	EPDM
8	Body high pressure	Ductile iron / Epoxy Int/Ext 150 μ \pm 50 μ
9-10	Valve	Chromed brass
11	Stem	Stainless steel
12	Flange	Stainless steel
13	Seal carrier	Bronze (DN40-50) Cast iron / Epoxy
14	Plate	Bronze (DN40-50) Cast iron / Epoxy
15	Spring	Stainless steel



standard flow valve

Approvals

ACS CE PED 2014/68/UE

International construction Standards :

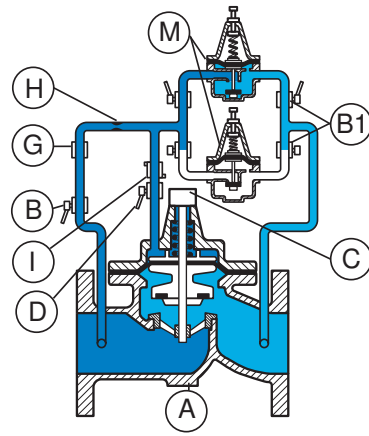
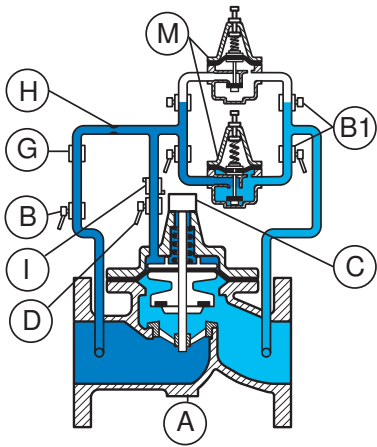
Directive 2014/68/UE

Connection with flange PN according to EN 1092-2

Application

The control valves C 102 reduces pressure in a distribution, irrigation or pump outlet system.

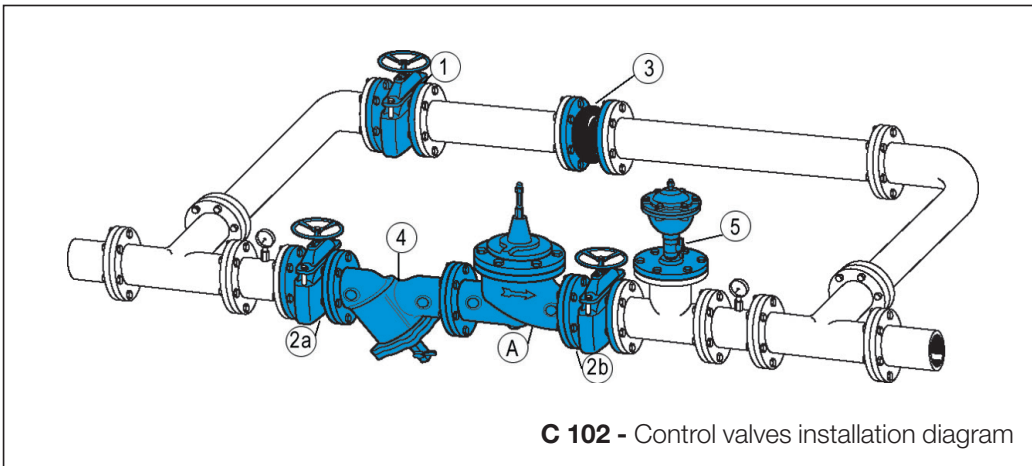
Operation



Type C102 works like a pressure reducing valve type C101. Only pilot (M) is working.

Only pilot (M) is working. Its setting can be different or similar to the setting of second pilot (M).

Installation



N°	Description
A	Main valve
B	Upstream isolation valve
B1	Downstream isolation valve
C	Position indicator with drain
D	Chamber isolation valve
G	Filter
H	Orifice-needle valve
I	Flow control
M	Pilot C101
1	Isolation valve of the by-pass
2a	Upstream isolation valve of the main water pipe
2b	Downstream isolation valve of the main water pipe
3	Rubber expansion joint
4	Filter
5	Single function air valve

Setting range :

- 0,4 to 5,51 bar
- 1,72 to 8,5 bar (standard)
- 2,06 to 24,5 bar

Installation :

- Install a strainer upstream
- Install an air relief valve down-stream or at the high point near the control valve
- Horizontal setting up : the cap of the valve should be oriented to the top and inclined at 45° maximum
- Vertical setting up : change the spring of the main valve (option 7)

Other types :

- C102S
- FKM seals in the main valve and in the pilot
- pilot stainless steel 304 and connection stainless steel 316TI

Maintenance

We recommend a maintenance programme of between 6 to 12 months according to the quality of the water and to the pressure :

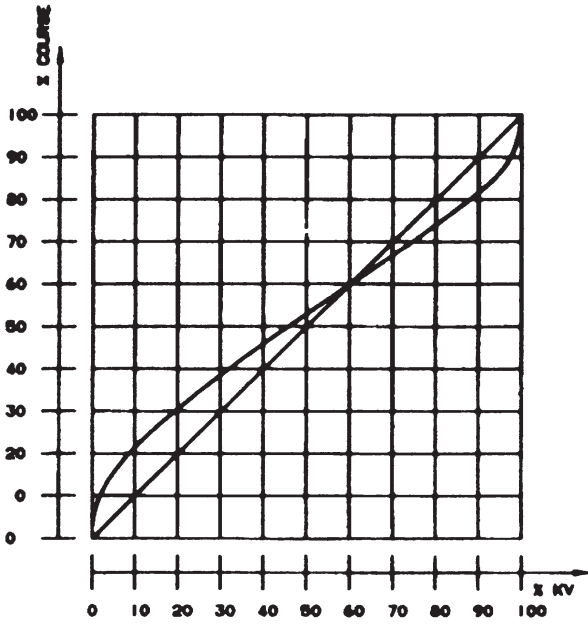
- Purging the upper chamber
- Flushing the valves not frequently used
- Checking and cleaning filters of the pilot circuit and main piping system.
- Checking the working (pressures)

Every 5 years, general maintenance is advisable :

- Dismantling
- Cleaning of main valve and pilot valve
- Preventive removing of the seals (set available - please consult us)
- Reassembling and tests.

Operating characteristics

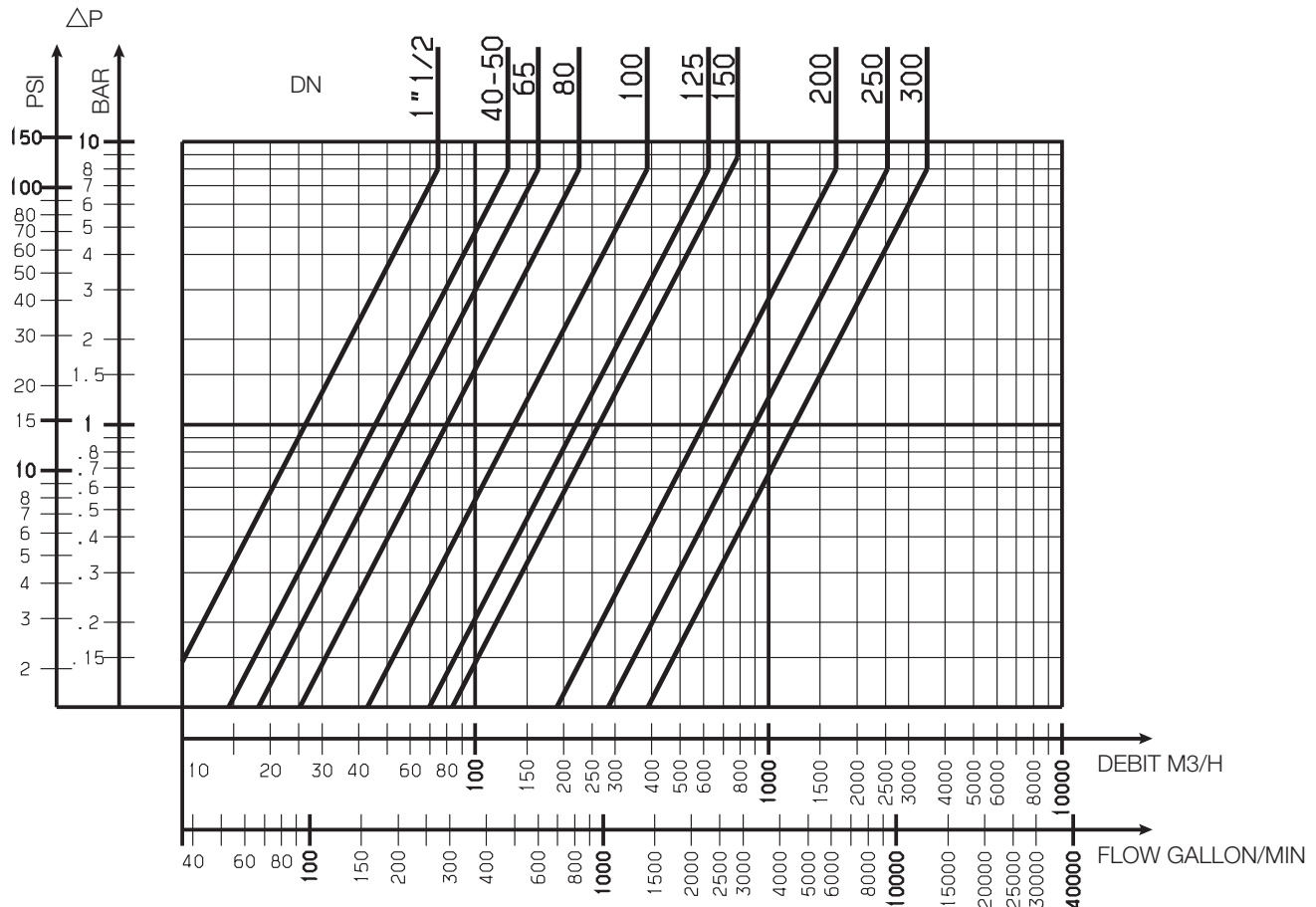
Choice of base valve



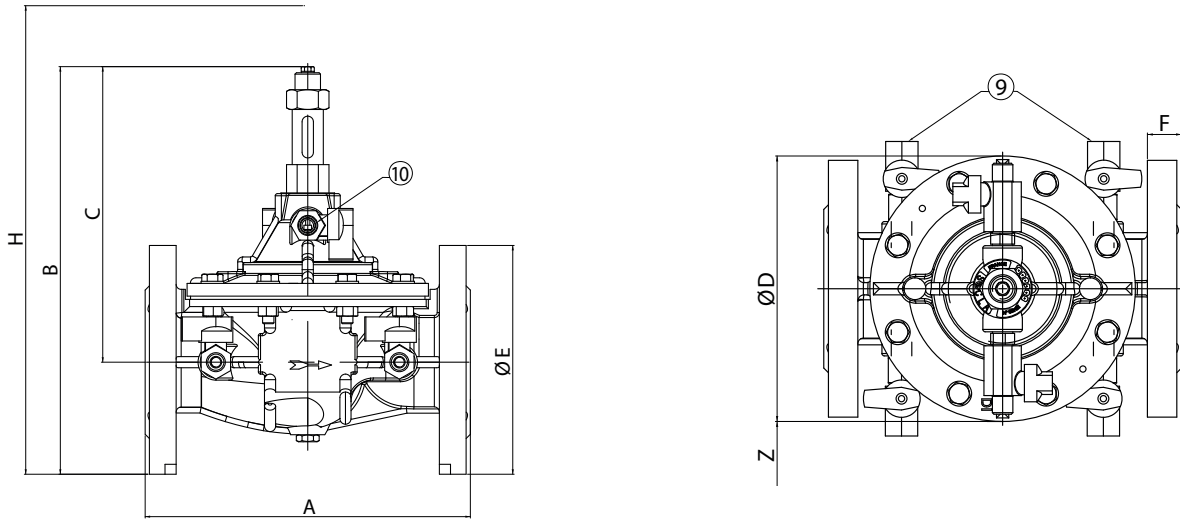
DN	Mini m ³ /h	Maxi m ³ /h	KV		ζ
			m ³ /h	L/s	
40	0,675	32,00	45,66	12,68	1,93
50	0,675	32,00	45,66	12,68	4,70
65	0,855	54,00	57,75	16,08	8,39
80	1,600	82,00	80,00	22,22	10,00
100	2,720	127,00	136,00	37,78	8,47
125	4,400	199,00	220,00	61,11	7,90
150	5,280	286,00	264,00	73,33	11,38
200	13,500	509,00	600,00	66,67	6,96
250	25,000	795,00	900,00	50,00	7,56
300	40,900	1145,00	1224,00	40,00	8,47

Headloss chart

Solid line: Base valve completely open



Sizing



standard flow valve

DN	A	B	C	Ø D	Ø E	F	H	Z	9	10
mm	mm	mm	mm	mm	mm	mm	Exc. C501 mm	mm	"	"
40	230	285	210	170	152	23	400	254	1/4	3/8
50	230	285	210	170	161	23	400	254	1/4	3/8
65	290	352	257	200	185	24	470	254	3/8	1/4
80	310	372	272	217	200	26	500	254	3/8	3/8
100	350	423	302	241	235	28	510	254	3/8	3/8
125	400	506	371	296	270	30	570	254	3/8	3/8
150	480	551	401	363	300	20	650	254	3/8	3/8
200	600	709	529	467	360	22	750	254	3/8	3/8
250	730	844	631	587	425	24	900	254	1/2	1/2
300	850	975	730	680	486	27	1100	254	1/2	1/2

(1) 78/plats

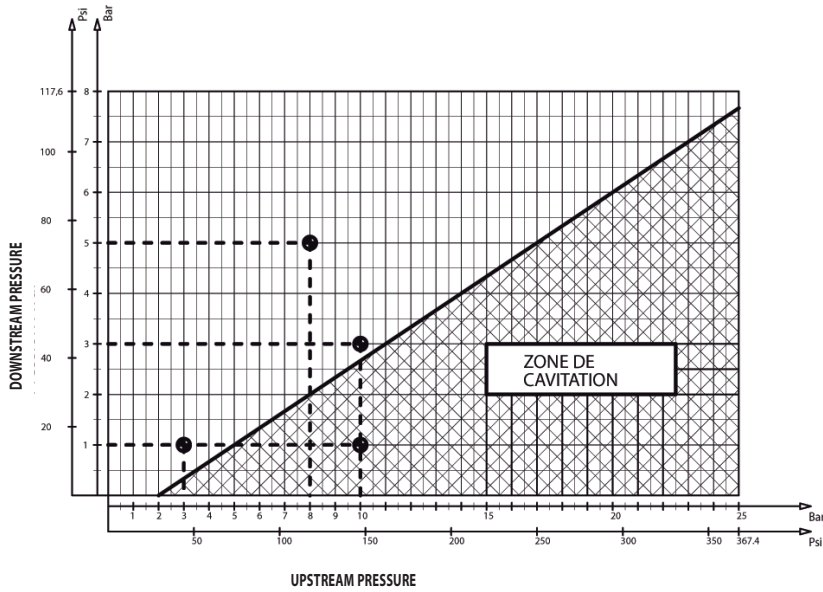
Other operating characteristics

Cavitation

A too large differential pressure and a low downstream pressure may result in damage to the valve by cavitation.

To avoid it, refer to the cavitation curve and if needed, reduce the differential pressure by installing and connecting two or more control valves in same line (consult us).

Stainless steel seat and counter seat are standard.



The descriptions and photographs contained in this product specification sheet are supplied by way of information only and are not binding.

Socla reserves the right to carry out any technical and design improvements to its products without prior notice. Warranty : All sales and contracts for sale are expressly conditioned on the buyer's assent to Socla terms and conditions found on its website at www.socla.com. Socla hereby objects to any term, different from or additional to Socla terms, contained in any buyer communication in any form, unless agreed to in a writing signed by an officer of Socla.



A WATTS Brand

Socla sas

365 rue du Lieutenant Putier • 71530 Virey-Le-Grand • France

Tel. +33 03 85 97 42 00 • Fax +33 03 85 97 42 42

contact@wattswater.com • www.socla.com

ISO 9001 version 2015 / ISO 18001