

Technical data sheet

Type X3900

3-piece ball valve

Handle with locking system

Applications and special features



- Casing and ball in stainless steel 316
- PTFE seal
- Full bore
- Female/female connection
- ISO 5211 top connection
- Handle with locking system.

Technical description

Important notice :

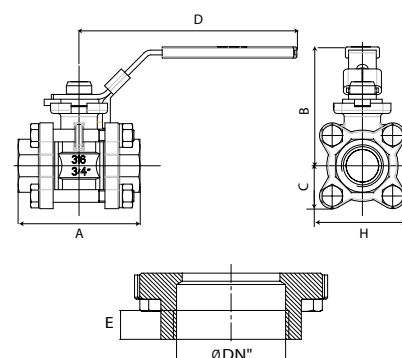
The indicated pressure for the different categories of fluids (L1/L2/G1/G2) is under no condition a guarantee of use. Therefore, it is essential to validate the use of products under given operating conditions.

DN	"	mm	PFA bar	Cat				Cat	References	Vvs-nr
				L1	L2	G1	G2			
1/2	15	63	63	63	63	63	63	3.3	149B12078	
3/4	20	63	63	63	63	63	63	3.3	149B12079	
1	25	63	63	63	63	63	63	3.3	149B12080	
1 1/4	32	63	62	63	x	63	63	3.3	149B12081	
1 1/2	40	63	50	63	x	25	3.3	149B12082		
2	50	63	40	63	x	20	3.3	149B12083		
2 1/2	65	40	30	40	x	15	3.3	149B12084		
3	80	40	25	40	x	12	3.3	149B12085		

- **Connection** : Female/female, BSP threaded.
- **Permissible operating pressure PFA - water** : see table
- **Maximum permissible pressure PS - other mediums** : see table
- **θ** : Mini. -20°C
Maxi. +100°C
- **Mediums** : Neutral gas and liquids, viscosity up to 120 mm²/s
- **Approvals** : PED 97/23/CE
- **International construction Standards** :
 - CE Conformity Directive 97/23/CE

Overall dimensions

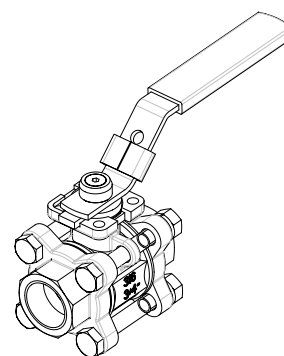
DN	A	B	C	D	H	E	Weight
"	mm	mm	mm	mm	mm	mm	Kg
1/2	15	70	72	24	138	49	13
3/4	20	77	75	27	138	54	15
1	25	92	83	33	169	66	18
1 1/4	32	105	88	36	169	73	20
1 1/2	40	120	114	41	219	82	21
2	50	141	123	50	219	100	24
2 1/2	65	185	160	64	262	128	29
3	80	205	168	70	262	139	32



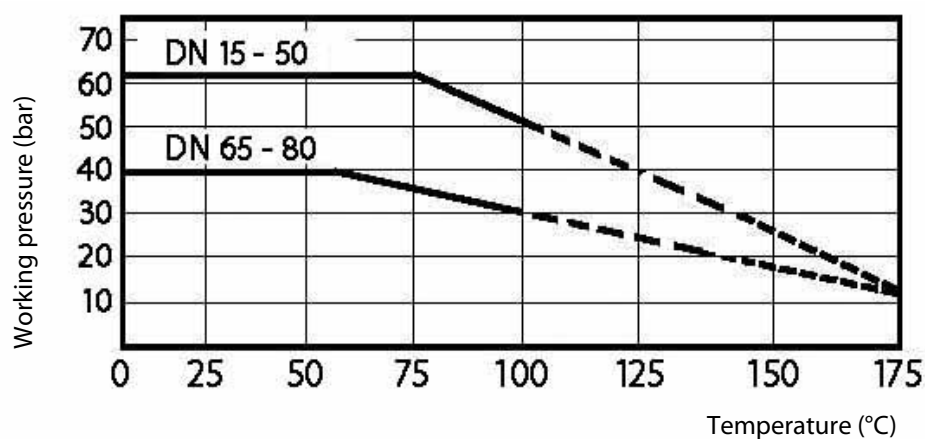
Technical data sheet **Type X3900** - Ball valves - handle with locking system

Spare parts list and materials

Description	Materials	EURO	ANSI
CASING	Stainless steel	AISI 316	1.4408
BALL	Stainless steel	AISI 316	1.4408
SHAFT	Stainless steel	AISI 316	1.4401
BALL SEAL	PTFE		
SHAFT SEAL	DN 15-50 : PTFE+FKM DN 65-80 : PTFE		
HANDLE	Stainless steel		



Working principle



----- Please consult us

Socla can accept no responsibility for possible errors in catalogue, brochures and other printed material. Socla reserve the right to alter its products without notice. This also applies to products already agreed. All trademarks in this material are the property of the respective companies. All right reserved.

Socla SAS

365 rue du lieutenant Putier
71530 VIREY LE GRAND
Postal address : BP 10273
71107 CHALON SUR SAONE Cedex

Tel : 33 3 85 97 42 52
Fax : 33 3 85 97 97 42
<http://www.socla.com>
e-mail: commerfr@socla.com