

## Technical data sheet

### Type X1666

#### Ball valve

Xoline for industry

#### Applications and special features



- 1-piece ball valve
- Standard passage
- Industry, high pressure, high temperature.
- Female/female connection.

#### Technical description

##### Important notice :

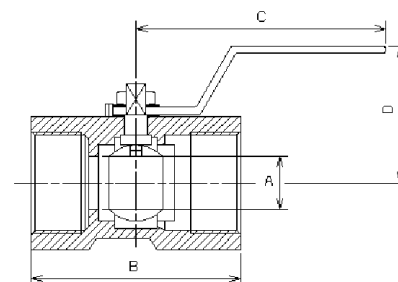
The indicated pressure for the different categories of fluids (L1/L2/G1/G2) is under no condition a guarantee of use. Therefore, it is essential to validate the use of products under given operating conditions.

DN "	mm	PFA bar	PS - bar				Cat.	References	Vvs-nr
			L1	L2	G1	G2			
1/4	8	63	63	63	63	63	3.3	149B 5209	
3/8	10	63	63	63	63	63	3.3	149B 5210	
1/2	15	63	63	63	63	63	3.3	149B 5211	
3/4	20	63	63	63	63	63	3.3	149B 5212	
1	25	63	63	63	63	63	3.3	149B 5213	
1 1/4	32	63	62	63	0,5	63	3.3	149B 5214	
1 1/2	40	63	50	63	0,5	25	3.3	149B 5215	
2	50	63	40	63	0,5	20	3.3	149B 5216	

- **Connection** : Female/Female, BSP threaded
- **Permissible operating pressure PFA - water-** (for supply, distribution and disposal of water) : See table
- **Maximum permissible pressure PS - other mediums :**  
See table
- **θ** Mini. 0 °C  
Maxi. 230 °C
- **Mediums :** various fluids, water

#### Overall dimensions

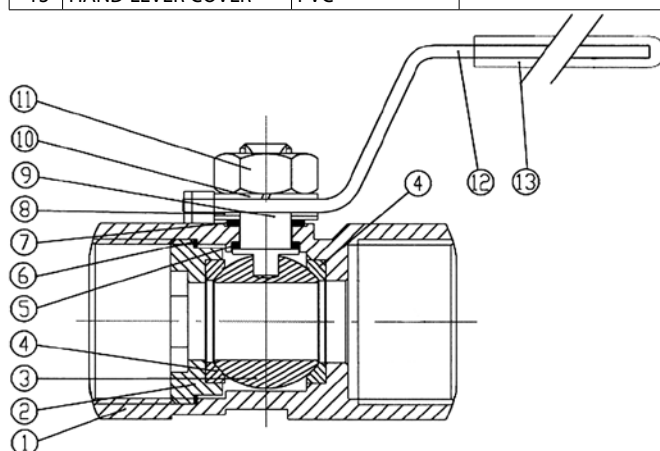
DN		A	B	C	D	Weight
"	mm	mm	mm	mm	mm	kg
1/4	8	5	39	68	33	0,09
3/8	10	7	44	79	35	0,11
1/2	15	9,2	56	90	42	0,19
3/4	20	12,5	59	90	46	0,26
1	25	16	71	104	50	0,41
1 1/4	32	20	77	104	56	0,62
1 1/2	40	25	83	126	66	0,88
2	50	32	100	126	72	1,42



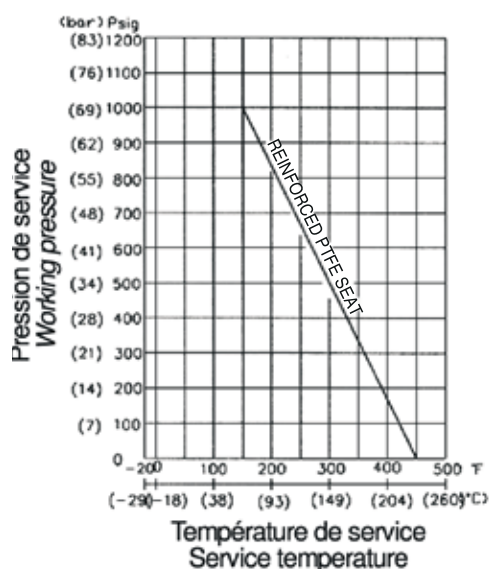
## Technical data sheet      Type X1666 - Ball valve

### Spare parts list and materials

Nb	Description	Materials	EURO	ANSI
1	CASING	Stainless steel	GX5Cr-NiMo19-11-2	ASTM A 351-CF8M
2	SEAT	Stainless steel	X5Cr-NiMo17-12-2	AISI 316
3	BALL	Stainless steel	GX5Cr-NiMo19-11-2	ASTM A 351-CF8M
4	SEAL	PTFE		
5	SEAL	PTFE		
6	SEAL	PTFE		
7	SEAL	PTFE		
8	WASHER	Stainless steel	X5Cr-Ni18-10	AISI 304
9	STEM	Stainless steel	X5Cr-NiMo17-12-2	AISI 316
10	WASHER	Stainless steel	X5Cr-Ni18-10	AISI 304
11	NUT	Stainless steel	X5Cr-Ni18-10	AISI 304
12	HAND LEVER	Stainless steel	X5Cr-Ni18-10	AISI 304
13	HAND LEVER COVER	PVC		



### Working principle



Socla can accept no responsibility for possible errors in catalogue, brochures and other printed material. Socla reserve the right to alter its products without notice. This also applies to products already agreed. All trademarks in this material are the property of the respective companies. All right reserved.

### Socla SAS

365 rue du lieutenant Putier  
71530 VIREY LE GRAND  
Postal address : BP 10273  
71107 CHALON SUR SAONE Cedex

Tel : 33 3 85 97 42 52  
Fax : 33 3 85 97 97 42  
<http://www.socla.com>  
e-mail: [commerfr@socla.com](mailto:commerfr@socla.com)