

Technical data sheet

Type 931

Non return valve EB

System 01

Applications and special features




- Operates in any position
- Minimum head loss
- Silent, robustness
- Does not generate hammering
- Closing system : double axial guiding with return spring
- Excellent sealing at high as well as at low pressure ensured by a specially designed lip-ring seal.
- To be inserted :
18,5mm for DN 1/2» (Ref 1022J)
20 mm for DN 3/4» (Ref 1024)
24mm for DN 1» (Ref 1023)

Technical description

DN		PFA (bar)	PS (bar)				Cat.	References	Vvs-nr
C	"		L1	L2	G1	G2			
15	1/2	10	10	10	10	10	3.3	149B 1022J	
20	3/4	10	10	10	10	10	3.3	149B 1024	
25	1	10	10	10	10	10	3.3	149B 1023	

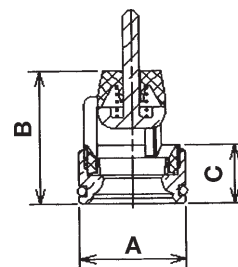
Important notice :

The indicated pressure for the different categories of fluids (L1/ L2/G1/G2) is under no condition a guarantee of use. Therefore, it is essential to validate the use of products under given operating conditions.

- **Connection** : To be inserted
- **Permissible operating pressure PFA - water-** (for supply, distribution and disposal of water) : See table
- **Maximum permissible pressure PS - other mediums** : See table
- **θ** : Mini. -10 °C
Maxi. 95 °C
- **Mediums** : Clear liquids, gas
- **Approvals** : ACS  Except DN 3/4
- **International construction Standards** : NF Antipollution NF EN 13959 - EN1717

Overall dimensions

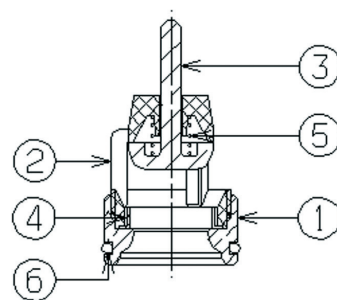
DN	References	A	B	C	Weight
"		mm	mm	mm	kg
1/2	1022J	18,5	17,0	6,0	0,011
3/4	1024	20,0	26,0	11,0	0,016
1	1023	24,0	22,0	7,0	0,018




Technical data sheet Type 931 - EB antipollution non-return valve

Spare parts list and materials

Nr	Description	Materials	EURO	ANSI
1	CASING	Messing	CuZn39Pb3	
2	GUIDE	PPA		
3	CLOSING SYSTEM	Brass PTFE	CuZn39Pb3	
4	SEAL	EPDM		
5	SPRING	Stainless steel	X10CrNi18-8	AISI 302
6	SEAL	EPDM		

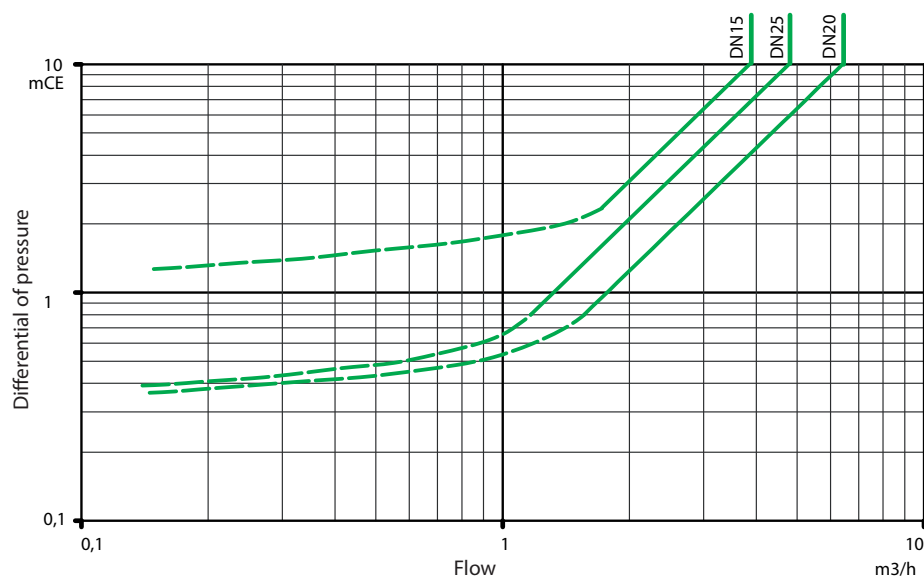


Working principle

DN		Opening pressure (in mm WC)	Kv	ζ
C	mm		m³/H	
15	1/2	800	3,30	23,30
20	3/4	200	6,81	5,40
25	1	200	6,81	13,20

Directions for use :

- Solid line : Valve completely open
- Dotted line : opening stage of valve



Socla can accept no responsibility for possible errors in catalogue, brochures and other printed material. Socla reserve the right to alter its products without notice. This also applies to products already agreed. All trademarks in this material are the property of the respective companies. All right reserved.

Socla SAS

365 rue du lieutenant Putier
71530 VIREY LE GRAND
Postal address : BP 10273
71107 CHALON SUR SAONE Cedex

Tel : 33 3 85 97 42 52
Fax : 33 3 85 97 97 42
<http://www.socla.com>
e-mail: commer@socla.com