

Technical data sheet

Type C901 / C901C

Control valve

Flow limiter

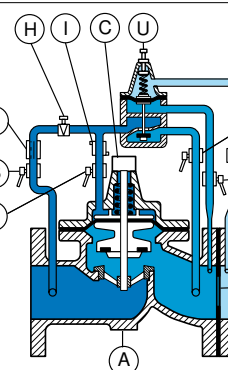
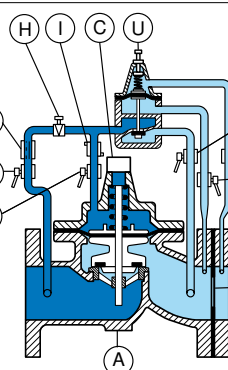
Applications and general characteristics



- This valve controls and maintains a maximum preset flow out of the valve regardless of variations in upstream and downstream pressure.
- This valve can be used to control the flow from a pump into a network of water distribution or irrigation, or as flow limiter to feed a secondary system.
- Equipped with non return valves, it closes automatically in case of backflow (C901C)
- Approvals : ACS - WRAS

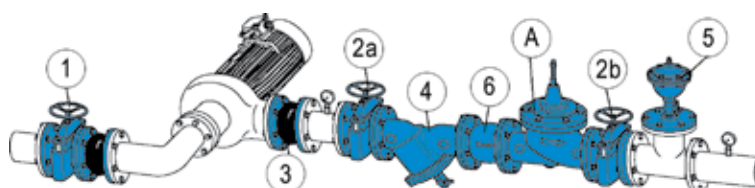
Working principle

When the flow rate is increasing through the orifice plate DI, the head loss also increases, the spring of pilot valve U is compressed, pilot valve U and main valve A will close. The flow rate decreases and the head loss will reach its setting level.



When the flow rate is decreasing through the orifice plate DI, the head loss also decreases, pilot valve U and main valve A will open. The flow rate increases and the head loss will reach its setting level.

Installation example and spare parts list



Setting range :

- 0 to 0,689 bar
- 0,14 to 2,41 bar

Installation :

- install a strainer upstream
- install an air relief valve downstream or at the high point near the control valve.
- horizontal setting up : the cap of the valve should be oriented to the top and inclined at 45° maximum.
- vertical setting up : change the spring of the main valve (option 7)
- keep a downstream pressure

Other types :

- C901S, C901M
- FKM seals in the main valve and in the pilot.

N°	Description	Materials
A	Main valve	Cast iron
B	Upstream isolation valve	nickel-plated brass
B1	Downstream isolation valve	nickel-plated brass
C	Position indicator with drain	Stainless steel - brass
D	Chamber isolation valve	nickel-plated brass
DI	Diaphragm	Stainless steel
E2	Diaphragm isolation valve	nickel-plated brass
G	Filter	Brass
H	Orifice-needle valve	Stainless steel or brass
I	Flow control	Brass
U	Pilot valve C901	Brass-stainless steel-bronze
1	Isolation valve	
3	Rubber expansion joint	
2a	Upstream isolation valve of the main water pipe	
2b	Downstream isolation valve of the main water pipe	
4	Filter	
5	Single function air valve	
6	Non return valve of the pump	