

Technical data sheet

Type C102 / C102C

Control valve

Pressure reducing valve with two pilots

NB : Additional information is available on the data sheet listed as «Main valve».

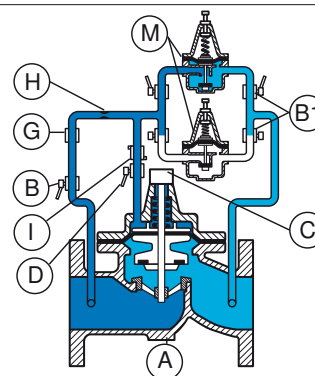
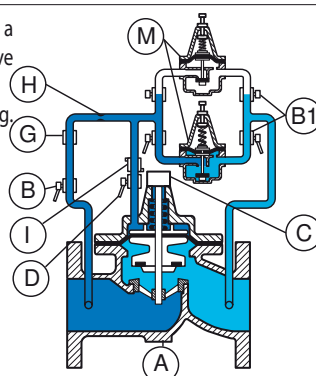
Applications and general characteristics



- This valve controls and maintains a preset reduced downstream pressure regardless of variations in demand and upstream pressure (the setting of downstream pressure is always below the upstream pressure).
- Equipped with two identical pilot valves. The addition of a second pilot allows uninterrupted working while servicing one of the pilots or ease the change of a different pressure setting.
- Equipped with check valves, it closes automatically in case of backflow (C102C).
- This valve reduces the pressure in networks of water distribution, irrigation or pump outlet.
- It allows the maintenance of a pilot while working.
- Approvals : ACS – **WRAS** : Type C102 only.

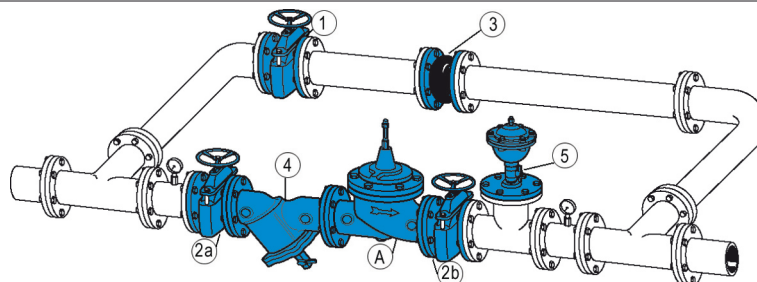
Working principle

Type C102 works like a pressure reducing valve type C101.
Only pilot M is working.



Only pilot M is working. Its setting can be different or similar to the setting of second pilot M.

Installation example and spare parts list



Setting range :

- 0,4 - 5,1 bar
- 1,72 - 8,5 bar (standard)
- 2,06 - 24,5 bar

Installation :

- install a strainer upstream
- install an air relief valve downstream or at the high point near the control valve.
- horizontal setting up : the cap of the valve should be oriented to the top and inclined at 45° maximum.
- vertical setting up : change the spring of the main valve (option 7).

Other types :

- C102S
- FKM seals in the main valve and in the pilot.
- 304 stainless steel pilot and 316Ti stainless steel fittings.

N°	Description	Materials
A	Main valve	Cast iron
B	Upstream isolation valve	nickel-plated brass
B1	Downstream isolation valve	nickel-plated brass
C	Position indicator with drain	Stainless steel - brass
D	Chamber isolation valve	nickel-plated brass
G	Filter	Brass
H	Orifice-needle valve	Stainless steel or brass
I	Flow control	Brass
M	Pilot C101	Brass-stainless steel-bronze
1	Isolation valve of the by-pass	
3	Rubber expansion joint	
2a	Upstream isolation valve of the main water pipe	
2b	Downstream isolation valve of the main water pipe	
4	Filter	
5	Single function air valve	