

BABM CD

BA backflow preventers with verifiable reduced pressure zone with angled funnel for vertical descending installations

Technical Data Sheet



Description

The disconnecteur BABM CD preventers protect the drinking water network by interrupting the continuity of the supply, emptying and evacuating to waste in case of danger of water being turned back into the main pipeline.

- Easy maintenance thanks to modular sub-sets.
- Compact design and space-saving.
- Piston technology on the relief valve, without membrane : easy mounting/dismantling, reinforced longevity.
- Reduced head losses.
- High quality materials.
- Easy access.
- Connection : Male threaded union nuts (BSP) ISO 228-1



BABM CD

BA backflow preventers with verifiable reduced pressure zone with angled funnel for vertical descending installations

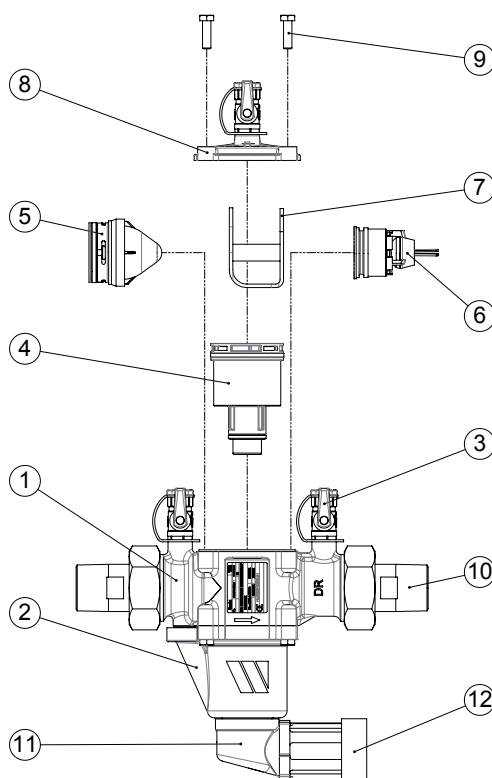
DN		PFA en bar	Groupe acoustique	Ref.	Poids Kg
"	mm				
1/2	15	10	I	149B70018	1,495
3/4	20	10	I	149B70019	1,415
1	25	10	I	149B70020	3,002
1 1/4	32	10	I	149B70021	3,150
1 1/2	40	10	-	149B70022	6,500
2	50	10	-	149B70023	7,396

Technical features

Operating temperature	Maxi. 65 °C
Permissible operating pressure (PFA) -water-	10 bar
Connection	Male / Male (BSP)
Mediums	Clear liquids

Nomenclature and materials

N°	Désignation	Matériaux
1	Body	DZR brass
2	Relief valve body	PA
3	Test cock	DZR Brass
4	Relief valve module	Stainless steel-POM-brass
5	Upstream valve	POM
6	Downstream valve	POM
7	Bearing	Stainless steel
8	Cover	DZR brass
9	Screws	Zinc coated steel
10	Socket	Brass
11	Elbow	PA
12	Funnel	PVC



Approvals



Standards / regulation :

EN 1717 - EN12729

Thread connection according to EN ISO 228-1 / ISO 7.1

Application

The disconnecteur BABM CD preventers protect the drinking water network by interrupting the continuity of the supply, emptying and evacuating to waste in case of danger of water being turned back into the main pipeline.

Installation

Directions for installation :

- Total accessibility
- non-submersible installation
- purge carefully all air from the installation (non polluted atmosphere),
- the discharge valve must be able to cope with the discharge flow rate.
- protection against frost or extreme temperatures

Installation specification :

- the correct installation requires :
- upstream : stop valve + filter (with drain cock)
- downstream : stop valve

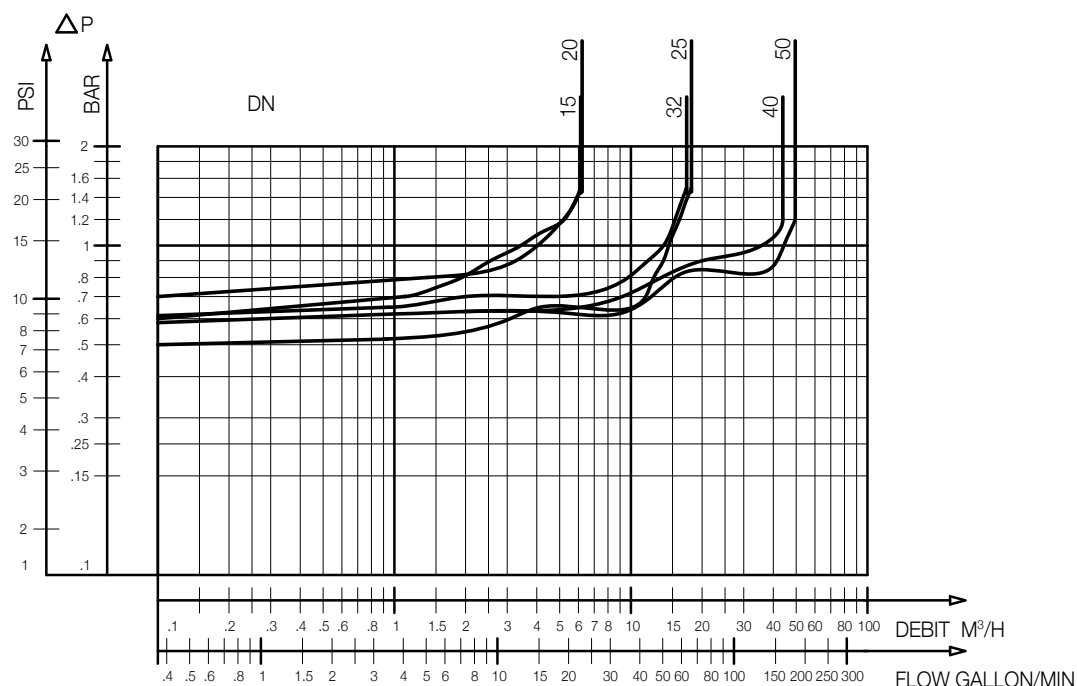
(See technical manual supplied with the RPZ)

Protection at the connection point to the public potable water system

Maintenance

- In accordance with antipollution standards and hygiene regulations, the user undergoes the following requirements :
 - . declaration of intention of installation, 2 months before doing the work.
 - . declaration of putting into service.
 - . annual performance check (maintenance), including the accessories which are part of the protection device ; the results are communicated to the health/water authorities.
- In the case of an upstream diversion in the area right in front of the RPZ, it is necessary to install a check valve between the diversion and the RPZ.
- Always manipulate the upstream valve slowly

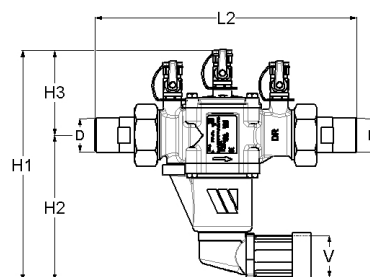
Operation



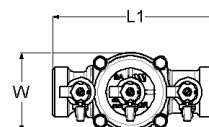
BABM CD - Headloss chart

Sizing

DN	D	V	L1	L2	H1	H2	H3	W
"	mm	mm	mm	mm	mm	mm	mm	mm
1/2	15	32	122	201	168,5	103	65,5	53
3/4	20	32	122	201	168,5	103	65,5	53
1	25	40	157	252	238	156	82	76
1 1/4	32	40	157	252	238	156	82	76
1 1/2	40	50	220	336	303,5	202,5	101	115
2	50	50	220	336	303,5	202,5	101	115



BABM CD



The descriptions and photographs contained in this product specification sheet are supplied by way of information only and are not binding. Socla reserves the right to carry out any technical and design improvements to its products without prior notice. Warranty : All sales and contracts for sale are expressly conditioned on the buyer's assent to Socla terms and conditions found on its website at www.socla.com. Socla hereby objects to any term, different from or additional to Socla terms, contained in any buyer communication in any form, unless agreed to in a writing signed by an officer of Socla.



A WATTS Brand

Socla sas

365 rue du Lieutenant Putier • 71530 Virey-Le-Grand • France

Tél. +33 03 85 97 42 00 • Fax +33 03 85 97 42 42

contact@wattswater.com • www.socla.com

ISO 9001 version 2015 / ISO 18001