

## Technical data sheet

### Type 802

#### Non-return valve

#### W system

#### Applications and special features



- Operates in any position
- Easy to install and dismantle, space-saving
- Minimum head loss
- Does not generate hammering
- Closing system : disc with parabolic edges with return spring ; lateral guiding by 3 or 4 ribs (ND 32 to 100).
- Closing system with back axial guiding and return spring (ND 125 to 200).
- Metal/metal seal (machined trim)
- Using these check valves on networks equipped with piston pumps or compressors is not recommended.

#### Technical description

DN	PN	PFA in bar	PS in bar				Cat.	References	Vvs-nr
			L1	L2	G1	G2			
1 <sup>1/4</sup>	32	6/16	16	16	16	16	I	149B 2413	
1 <sup>1/2</sup>	40	6/16	16	16	16	16	I	149B 2414	
2	50	6/16	16	16	16	16	I	149B 2415	
2 <sup>1/2</sup>	65	6/16	16	16	16	15	I	149B 2416	
3	80	6/16	16	16	16	12	I	149B 2417	
4	100	6/16	16	16	16	10	I	149B 2418	
5	125	16	16	16	16	0,5	I	149B 2439	
6	150	16	16	13	16	0,5	I	149B 2440	
8	200	16	16	10	16	0,5	I	149B 2441	

#### Important notice:

The indicated pressure for the different categories of fluids (L1/L2/G1/G2) is under no condition a guarantee of use. Therefore, it is essential to validate the use of products under given operating conditions.

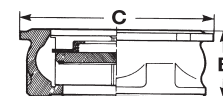
For DN 1/2", 3/4" and 1", see type 812

- **Connection** : Between flanges- PN see table
- **Permissible operating pressure PFA - water-** (for supply, distribution and disposal of water) : See table
- **Maximum Permissible pressure PS - other mediums**: See table
- **T°** : Mini. -10 °C  
Maxi. 200 °C (DN65 to 200mm : 100°C)
- **Mediums** : Clear liquids
- **Leakage rate** : according to EN 12266-1 rate E
- **Approvals** : ACS PED 2014/68/EU
- **International construction Standards** :  
CE Conformity Directive 97/23/CE  
Connection according to ASA B16.1 class 125RF  
Connection according to EN 1092.2  
Overall dimensions according to EN558-1 series 49

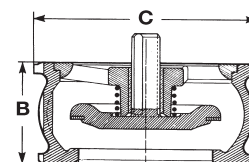
#### Overall dimensions

DN		B	C - PN6	C - PN10/16/ASA150	Weight
"	mm	mm	mm	mm	kg
1 <sup>1/4</sup>	32	28	78	84	0,35
1 <sup>1/2</sup>	40	31,5	88	94	0,52
2	50	40	98	109	0,73
2 <sup>1/2</sup>	65	46	118	129	1,52
3	80	50	134	144	2,17
4	100	60	154	162	3,35
5	125	90	-	194	8,55
6	150	106	-	218	12,70
8	200	140	262	273	23,40

DN 1"1/4 - 4"



DN 5 - 8"

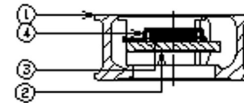


## Technical data sheet Type 802 - Non-return valve

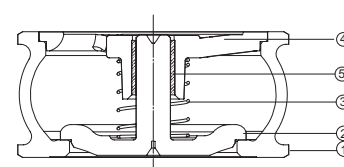
### Spare parts list and materials

Nb	Description	Materials	EURO	ANSI
1	CASING DN 32 to 50	DZR brass	CuZn35Pb2Al-C	
	DN 65 to 100	Cast iron + epoxy ext.	EN-GJL-250	ASTM A 48 35 B
	DN125 to 200	Cast iron + epoxy ext.	EN-GJS-400-15	ASTM A 536 60-40-18
2	CLOSING SYSTEM DN 32 to 100	Stainless steel	X2CrNiMo17-12-2	AISI 316L
	DN125 to 200	Cast iron + epoxy	EN-GJL-250	ASTM A 48 35 B
3	SPRING	Stainless steel	X10CrNi18-8	AISI 302
4	STOP-GUIDE DN 32 to 65	Stainless steel	X2CrNiMo17-12-2	AISI 316L
	DN80 to 100	Stainless steel	X2CrNi18-9	AISI 304L
	DN125 to 200	Cast iron + epoxy	EN-GJL-250	ASTM A 48 35 B
5	RING DN125 to 200	Bronze	CuSn12-C	

DN 1"1/4 to 4"



DN 5" to 8"



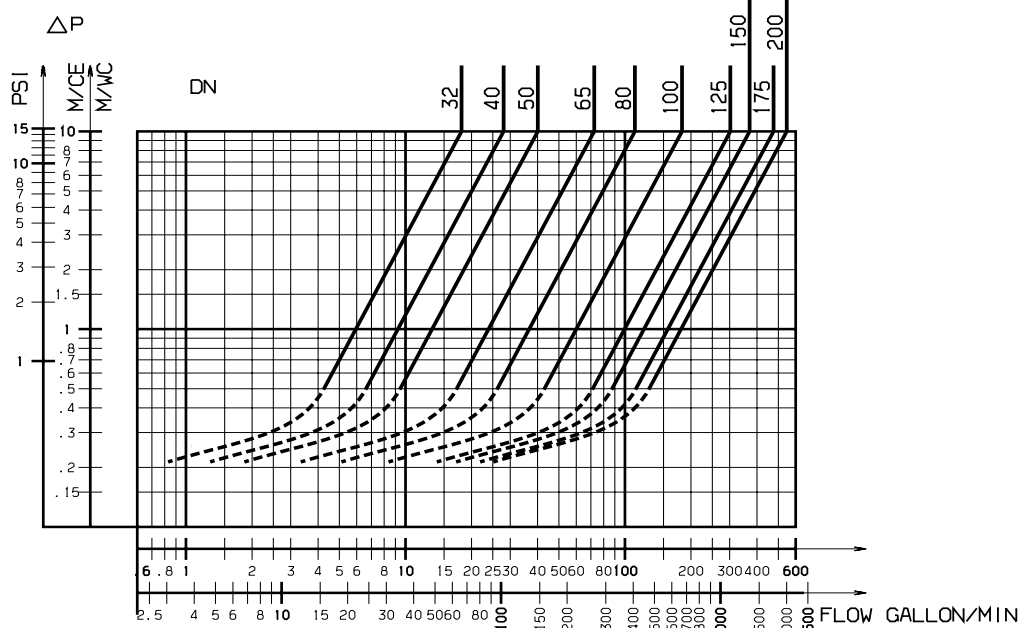
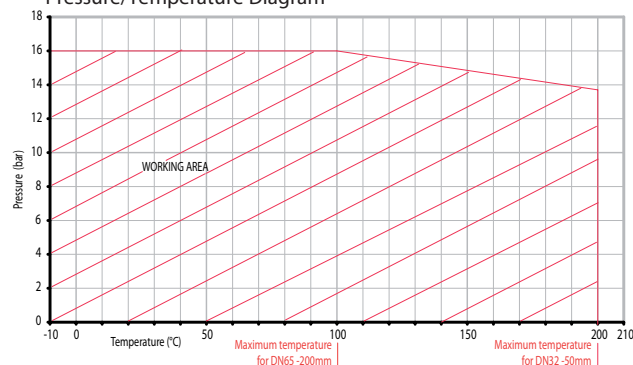
### Working principle

DN		Opening pressure mm/WC				Kv	ζ
		↑	↓	↔	Without spring		
1 1/4"	32	190	130	160	30	18,00	5,0
1 1/2"	40	200	120	160	40	28,00	5,1
2"	50	210	110	155	50	40,10	6,1
2 1/2"	65	210	100	155	55	72,50	5,3
3"	80	226	95	160	65	111,00	5,2
4"	100	235	75	205	80	182,00	4,7
5"	125	335	75	205	130	302,00	4,2
6"	150	360	70	215	145	370,00	5,8
8"	200	515	105	310	205	546,00	8,4

#### Direction for use :

- Solid line : Valve completely open
- Dotted line : opening stage of valve

Pressure/Temperature Diagram



Socla can accept no responsibility for possible errors in catalogue, brochures and other printed material. Socla reserve the right to alter its products without notice. This also applies to products already agreed. All trademarks in this material are the property of the respective companies. All right reserved.

### Socla SAS

365 rue du lieutenant Putier  
71530 VIREY LE GRAND  
Postal address : CS 10273  
71107 CHALON SUR SAONE Cedex

Tel : 33 3 85 97 42 52  
Fax : 33 3 85 97 97 42  
<http://www.socla.com>  
e-mail: [contact@wattswater.com](mailto:contact@wattswater.com)