

Technical data sheet

Type 50

Non return valve
System B

Applications and special features



- Vertical ascending and horizontal position (position the ball housing above the axis of the pipe)
- Minimum head loss
- Silent, robust
- Non incrustating materials
- Closing system : ball lifted up by the liquid and guided to a lateral housing completely out of the way
- Sealing ensured by elastomer seal fixed on the seat.

Technical description

Important notice :

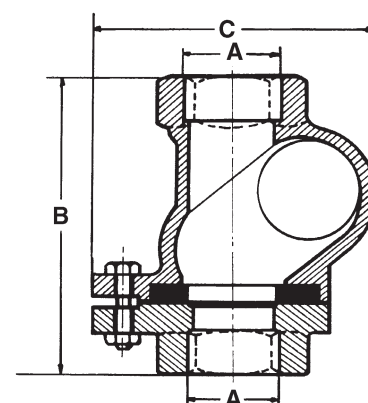
The indicated pressure for the different categories of fluids (L1/L2/G1/G2) is under no condition a guarantee of use. Therefore, it is essential to validate the use of products under given operating conditions.

DN	"	PFA in bar	PS in bar				Cat.	References	Vvs-nr
			L1	L2	G1	G2			
1	25	10	10	10	10	10	3.3	149B 2522	
1 1/4	32	10	10	10	10	10	I	149B 2523	
1 1/2	40	10	10	10	10	10	I	149B 2524	
2	50	10	10	10	10	10	I	149B 2525	
2 1/2	65	10	10	10	10	10	I	149B 2527	
3	80	10	10	10	10	10	I	149B 2528	

- **Connection:** Female/female, (BSP)
- **Permissible operating pressure PFA - water-** (for supply, distribution and disposal of water) : See table
- **Maximum permissible pressure PS - other mediums :** See table
- **θ** Mini. -10 °C
Maxi. 80 °C
- **Mediums :** Thick liquids, viscous liquids, gas, loaded liquids
- **Approvals :** PED 97/23/CE CPR 305/2011 UE (except DN 3")
- **International construction Standards :**
CE Conformity Directive 97/23/CE
CE Conformity Regulation 305/2011/UE EN12050-4 Standard
Thread connection according to NF E 03-005 ISO228

Overall dimensions

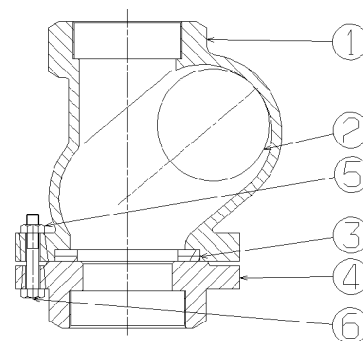
A		B	C	Weight
"	mm	mm	mm	kg
1	26/34	121	104	1,5
1 1/4	33/42	134	119	2
1 1/2	40/49	145	137	2,8
2	50/60	174	157	3,6
2 1/2	66/76	195	179	5,6
3	80/90	246	214	12,8



Technical data sheet Type 50 - Non return valve

Spare parts list and materials

Nb	Description	Materials	EURO	ANSI
1	CASING	Cast iron + epoxy	EN-GJL-250	ASTM A 48 35 B
2	BALL density 1,30	Thermodur		
3	SEAL DN 1 ^{1/2}	CR		
	Other DN	NR		
4	FLANGE	Cast iron + epoxy	EN-GJL-250	ASTM A 48 35 B
5	NUT	Stainless steel	X10CrNi18-10	AISI 304
6	SCREW	Stainless steel	X10CrNi18-10	AISI 304



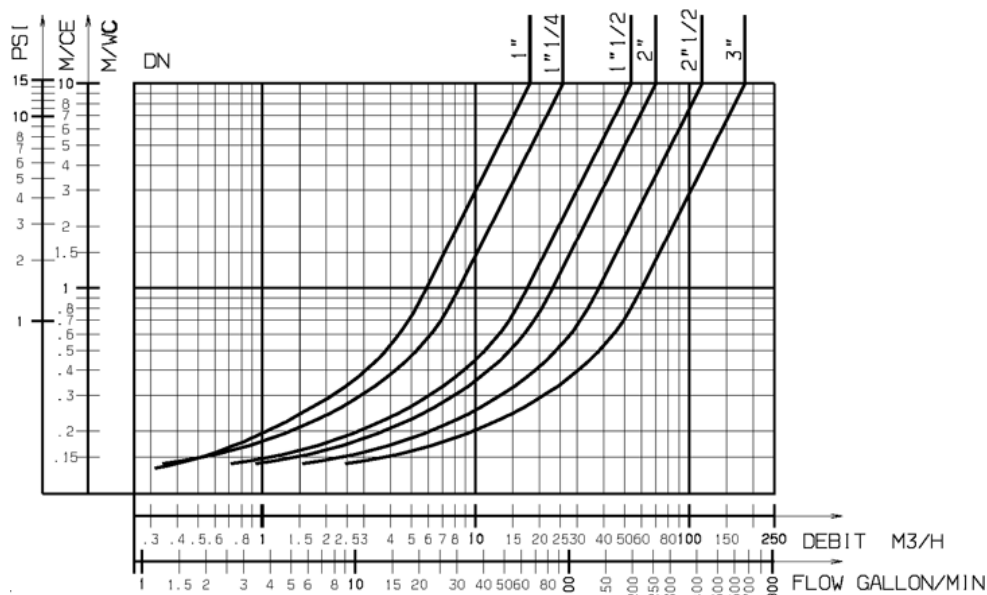
Working principle

DN		Opening pressure in mm/WC		Kv	ζ
"	mm	↑	↔	m³/H	
1	25	0 to 200	near 0	18,00	1,90
1 ^{1/4}	32			25,60	2,50
1 ^{1/2}	40			53,50	1,40
2	50			70,00	2,00
2 ^{1/2}	65			115,40	2,10
3	80			183,80	1,90

Directions for use :

- Solid line : Valve completely open
- Dotted line : opening stage of valve

Δ P



Socla can accept no responsibility for possible errors in catalogue, brochures and other printed material. Socla reserve the right to alter its products without notice. This also applies to products already agreed. All trademarks in this material are the property of the respective companies. All right reserved.

Socla SAS

365 rue du lieutenant Putier
71530 VIREY LE GRAND
Postal address : CS 10273
71107 CHALON SUR SAONE Cedex

Tel : 33 3 85 97 42 52
Fax : 33 3 85 97 97 42
<http://www.socla.com>
e-mail: commerfr@socla.com