

Technical data sheet

Type 402X Non return valve System 02

Applications and special features



- Operates in any position
- Minimum head loss
- Silent, reliable sealing, compact
- Exceptional robustness
- Does not generate hammering
- Closing system : long back axial guiding for reduced displacement
- Sealing guaranteed by a flat seal
- Return spring

Technical description

Important notice :

The indicated pressure for the different categories of fluids (L1/L2/G1/G2) is under no condition a guarantee of use.

Therefore, it is essential to validate the use of products under given operating conditions.



In addition, the operating instructions are available on our web site www.socla.com or by requesting from our sales department.

DN "	mm	PN	PFA in bar	PS in bar				Cat.	References	Vvs-nr
				L1	L2	G1	G2			
1 1/2	40	10/16	16	16	16	16	16	I	149F 016092	
2	50	10/16	16	16	16	16	16	I	149B 95002	
2 1/2	65	10/16	16	16	16	15	16	I	149B 97270	
3	80	10/16	16	16	16	16	16	II	149B 94084	
4	100	10/16	16	16	16	16	16	II	149F 016328	
5	125	10/16	16	16	16	16	16	II	149B 14977	
6	150	10/16	16	16	16	16	16	II	149F 017723	
8	200	10	10	10	10	10	10	II	149B 24101	
10	250	10	10	10	10	10	10	II	149F 020389	
12	300	10	10	10	10	10	10	II	149B 24682	
14	350	10	10	10	10	10	10	II	149B 97276	
16	400	10	10	10	10	0,5	10	II	149B 97277	

- Connection : flanges drilled PN : see table
- Permissible operating pressure PFA - water - (for supply, distribution and disposal of water) : see table
- Maximum permissible pressure PS - other mediums: See table

- θ : Mini. -10 °C
Maxi. 140 °C

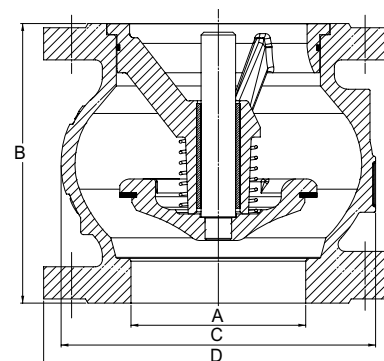
- Mediums : Gas, corrosive mediums

- Approvals :  PED 97/23/CE 

- International construction Standards :
CE Conformity Directive 97/23/CE
Flange drilling according to EN1092-2

Overall dimensions

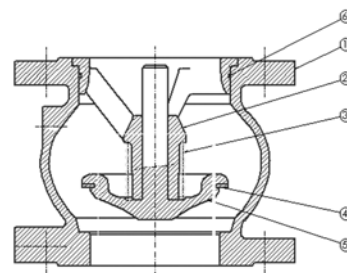
DN		B mm	C mm	D mm	Weight kg
"	mm				
1 1/2	40	85	80	150	4,2
2	50	100	97	165	5,8
2 1/2	65	120	125	185	8,1
3	80	140	150	200	10,2
4	100	170	187	220	14,5
5	125	200	220	250	24
6	150	230	250	285	32
8	200	289	340	340	53
10	250	354	420	405	94
12	300	396	490	460	140
14	350	473	586	533	225
16	400	560	680	597	312



Technical data sheet Type 402X - Non return valve

Spare parts list and materials

Nb	Description	Materials	EURO	ANSI
1	CASING	Stainless steel	X5CrNi18-10	AISI 304
2	GUIDE	Stainless steel	X5CrNi18-10	AISI 304
3	SPRING	Stainless steel	X10CrNi18-8	AISI 302
4	SEAL	FKM		
5	CLOSING SYSTEM	Stainless steel	X5CrNi18-10	AISI 304
6	SEAL	EPDM		

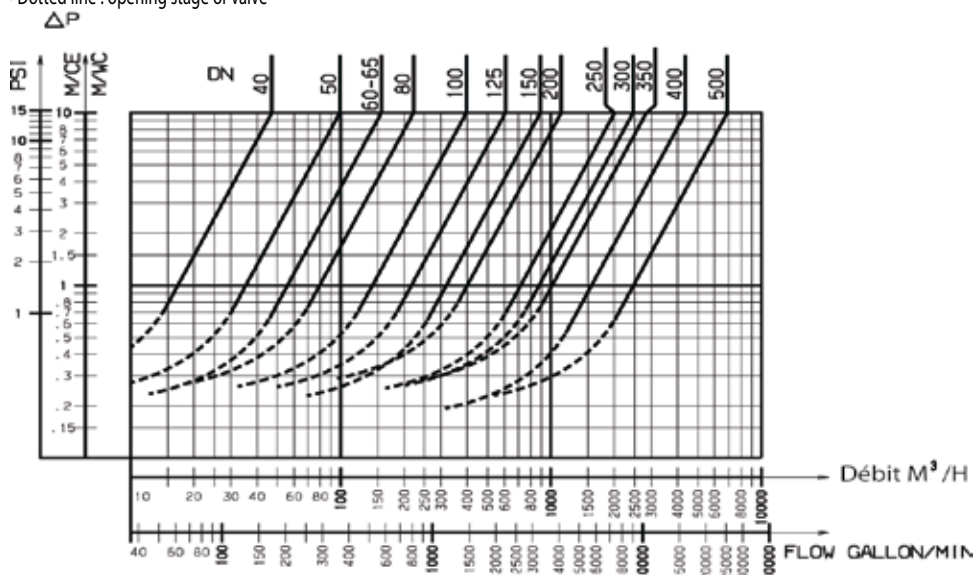


Working principle

DN		Opening pressure in mm/CE				Kv	ζ
"	mm	↑	↓	↔	Without spring	m³/H	
1 1/2	40	440	210	320	120	47,00	1,80
2	50	440	220	330	110	99,00	1,00
2 1/2	65	450	190	320	130	159,00	1,10
3	80	450	190	320	130	222,00	1,30
4	100	500	240	370	130	396,00	1,00
5	125	510	210	360	150	619,00	1,00
6	150	550	210	380	170	890,00	1,00
8	200	590	210	400	190	1120,00	2,00
10	250	710	210	460	250	2010,00	1,50
12	300	820	90	460	365	2459,00	2,10
14	350	860	100	480	380	2843,00	2,90
16	400	800	50	410	390	4370,00	2,10

Direction for use :

- Solid line : Valve completely open
- Dotted line : opening stage of valve



Socla can accept no responsibility for possible errors in catalogue, brochures and other printed material. Socla reserve the right to alter its products without notice. This also applies to products already agreed. All trademarks in this material are the property of the respective companies. All right reserved.

Socla SAS

365 rue du lieutenant Putier
71530 VIREY LE GRAND
Postal address : CS 10273
71107 CHALON SUR SAONE Cedex

Tel : 33 3 85 97 42 52
Fax : 33 3 85 97 97 42
<http://www.socla.com>
e-mail: commerfr@socla.com