

Technical data sheet

Type 30

Foot valve
System B

Applications and special features



- Vertical position
- Minimum head loss
- Silent, robust
- Non incrustating materials
- Closing system : ball lifted up by the liquid and guided to a lateral housing completely out of the way
- Sealing ensured by elastomer seal fixed on the seat.

Technical description


DN	PFA in bar	PS in bar				Cat.	References	Vvs-nr
		L1	L2	G1	G2			
1	25	10	10	10	x	3.3	149B 2322	
1 1/4	32	10	10	10	x	3.3	149B 2323	
1 1/2	40	10	10	10	x	3.3	149B 2324	
2	50	10	10	10	x	3.3	149B 2325	
2 1/2	65	10	10	10	x	3.3	149B 2327	
3	80	10	10	10	x	3.3	149B 2368*	

* Strainer in galvanised steel with round holes

Important notice :

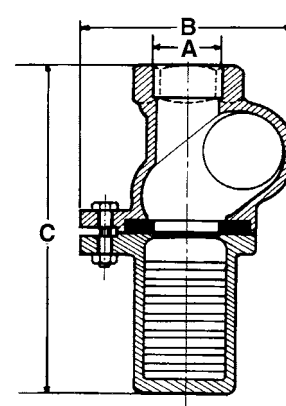
The indicated pressure for the different categories of fluids (L1/L2/G1/G2) is under no condition a guarantee of use.

Therefore, it is essential to validate the use of products under given operating conditions.

- **Connection** : Female, (BSP)
- **Permissible operating pressure PFA - water-** (for supply, distribution and disposal of water) : See table
- **Maximum permissible pressure PS - other mediums** : See table
- **θ** : Mini. -10 °C
Maxi. 80 °C
- **Mediums** : Thick liquids, viscous liquids, loaded liquids
- **Approvals** : 
- **International construction Standards** :
CE Conformity Directive 97/23/CE
Thread connection according to NF E 03-005 ISO 228

Overall dimensions

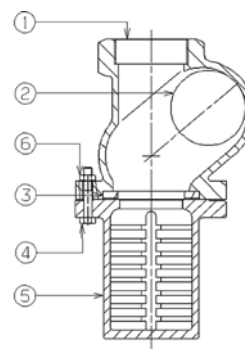
	A	B	C	Weight
"	mm	mm	mm	kg
1	26/34	104	183	1,7
1 1/4	33/42	119	198	2,3
1 1/2	40/49	137	215	3
2	50/60	157	256	3,9
2 1/2	66/76	179	292	5,8
3	80/90	214	303	13,4



Technical data sheet Type 30 - Foot valve

Spare parts list and materials

Nb	Description	Materials	EURO	ANSI
1	CASING	Cast iron + epoxy	EN-GJL-250	ASTM A 48 35 B
2	BALL density 1,30	Resin		
3	SEAL DN 1 1/2	CR		
	Other DN	NR		
4	SCREW	Stainless steel	X10CrNi18-10	AISI 304
5	STRAINER DN 1" to 2 1/2 DN 3"	Cast iron + epoxy Galanised steel	EN-GJL-250	ASTM A 48 35 B
6	NUT	Stainless steel	X10CrNi18-10	AISI 304

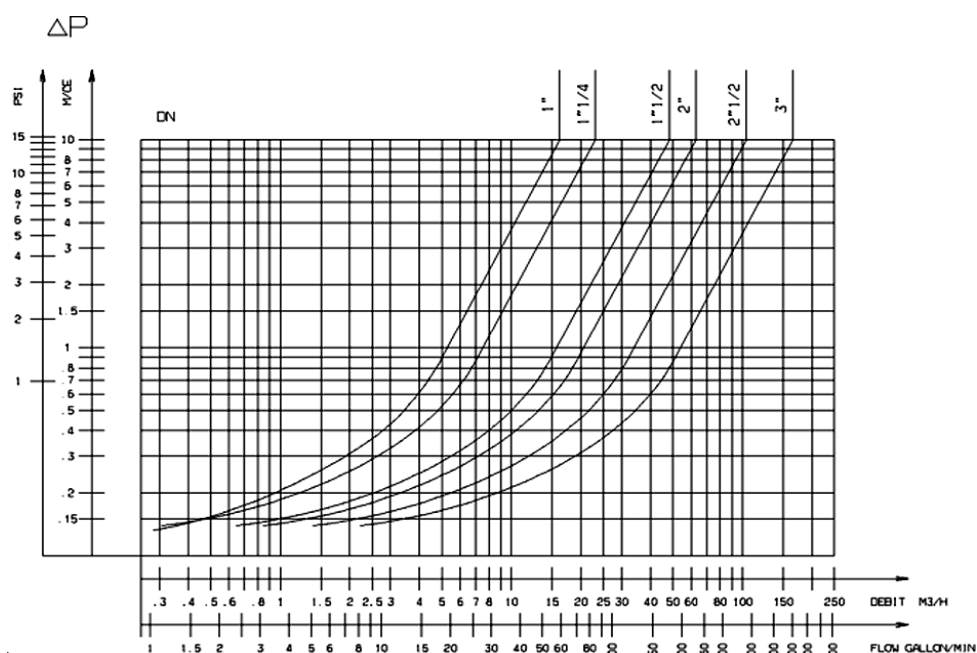


Working principle

DN		Opening pressure in mm/WC		Kv	ζ
"	mm	↑	↔	m³/H	
1	25	38	near 0	16,00	2,40
1 1/4	32	44		23,00	3,10
1 1/2	40	53		40,00	2,50
2	50	65		63,00	2,50
2 1/2	65	80		103,00	2,60
3	80	115		165,00	2,35

Directions for use :

- Solid line : Valve completely open



Socla can accept no responsibility for possible errors in catalogue, brochures and other printed material. Socla reserve the right to alter its products without notice. This also applies to products already agreed. All trademarks in this material are the property of the respective companies. All right reserved.

Socla SAS

365 rue du lieutenant Putier
71530 VIREY LE GRAND
Postal address : BP 10273
71107 CHALON SUR SAONE Cedex

Tel : 33 3 85 97 42 52
Fax : 33 3 85 97 97 42
<http://www.socla.com>
e-mail: commerfr@socla.com