

Technical data sheet

Type 233X Non-return valve 03 HP System

Applications
and special features



- Special design of the seat with a flexible tightness at low pressure added to a strong seat for tightness at high pressure.
- The accuracy of the axial guiding system guarantees a good centring on the seat.
- Hydraulic profile of the closing system to obtain a minimum head loss and to optimize the hydraulic performance.
- Operates in any position ; return spring.
- The variety and the quality of the materials allow a large field of industrial applications to be covered, from the more common installations to the most specialised industrial process.

Technical description

Important notice :

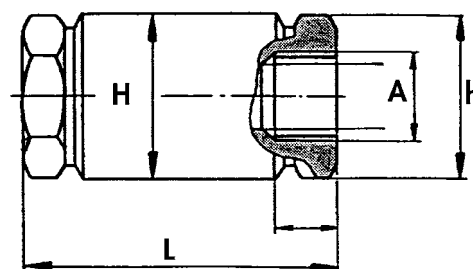
The indicated pressure for the different categories of fluids (L1/L2/G1/G2) is under no condition a guarantee of use. Therefore, it is essential to validate the use of products under given operating conditions.

DN	"	mm	PFA bar	PS - bar				Cat	Reference	Vvs-nr
				L1	L2	G1	G2			
1/4	6	160	160	160	160	160	160	3.3	149B3240X	
3/8	10	160	160	160	160	160	160	3.3	149B3241X	
1/2	15	160	160	160	160	160	160	3.3	149B3242X	
3/4	20	160	160	160	160	160	160	3.3	149B3243X	
1	25	160	160	160	160	160	160	3.3	149B3244X	
1 1/4	32	100	62	100	0,5	100	3.3	149B3245X		
1 1/2	40	100	50	100	0,5	25	3.3	149B3246X		
2"	50	100	40	100	0,5	20	3.3	149b3247X		

- **Connections :** Female/ Female gas : see table
- **Permissible operating pressure PFA - water-** (for supply, distribution and disposal of water) : See table
- **Maximum permissible pressure PS - other mediums :**
See table
- **θ** Mini. - 20 °C
Maxi. 230 °C
- **Mediums :** Clear water - Hydrocarbons - Vegetal oils - Mineral oils - Animal oils - Inorganic acids
- **International construction Standards :**
Thread connections according to NFE 03-005 ISO 228

Overall dimensions

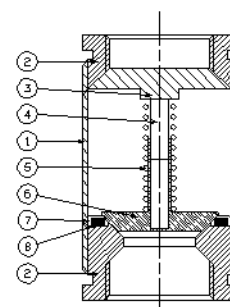
A		L	H	h	Weight
"	mm	mm	mm	mm	kg
1/4	6	73	24	22	0,17
3/8	10	76	30	27	0,28
1/2	15	77	38	32	0,41
3/4	20	92	48	41	0,78
1	25	109	57	50	1,26
1 1/4	32	123	70	65	2,12
1 1/2	40	141	80	70	3,07
2	50	164	100	90	5,54



Technical data sheet Type 233x - Non-return valve

Spare parts list and materials

Nb	Description	Materials	EURO	ANSI
1	CASING	Stainless steel	X5CrNi18-10	ANSI 304
2	SEAL	FKM		
3	CONNECTION	Stainless steel	X10CrNiS18.9	ANSI 303
4	STEM	Stainless steel	X10CrNiS18.9	ANSI 303
5	SPRING	Stainless steel	X10CrNiS18.9	ANSI 303
6	CLOSING SYSTEM	Stainless steel	X10CrNiS18.9	ANSI 303
7	CLIPS	Stainless steel	X10CrNiS18.9	ANSI 303
8	SEAL	PTFE		



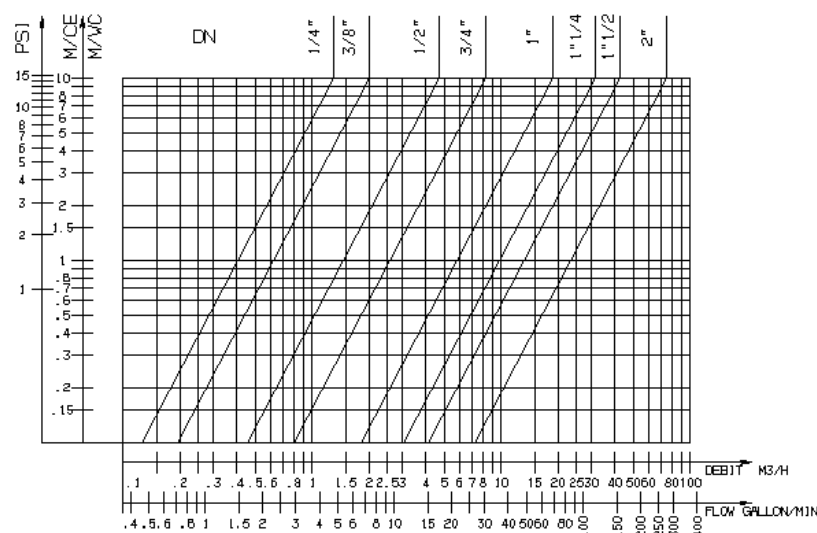
Working principle

DN		Opening pressure - bar	Kv	ζ
"	mm			
1/4	6	0,5	1,30	4,00
3/8	10		2,00	4,00
1/2	15		4,70	3,70
3/4	20		8,30	3,70
1	25		18,75	1,80
1 1/4	32		31,50	1,70
1 1/2	40		42,50	2,30
2	50		75,00	1,80

Direction for use :

- Solid line : Valve completely open
- Dotted line : opening stage of valve

ΔP



Socla can accept no responsibility for possible errors in catalogue, brochures and other printed material. Socla reserve the right to alter its products without notice. This also applies to products already agreed. All trademarks in this material are the property of the respective companies. All right reserved.

Socla SAS

365 rue du lieutenant Putier
71530 VIREY LE GRAND
Postal address : BP 10273
71107 CHALON SUR SAONE Cedex

Tel : 33 3 85 97 42 52
Fax : 33 3 85 97 97 42
<http://www.socla.com>
e-mail: commerfr@socla.com