

Technical data sheet

Type 21

Water hammer arrestors

Desbordes

Applications and special features



- For domestic plumbing installation.
- Strongly softens water hammer due to equipment as mixer tap, 1/4 ball valve, solenoid valve.
- No maintenance required : no greasing, no pumping up because no tank to be swelled.
- Optimum working around a 3 bars network.
- To be placed preferably in line and before water hammer area.
- Can be installed in any position./orientations (water hammer arrestor).
- The way of the flow must be respected to take advantage of venturi internal effect, improving efficiency.

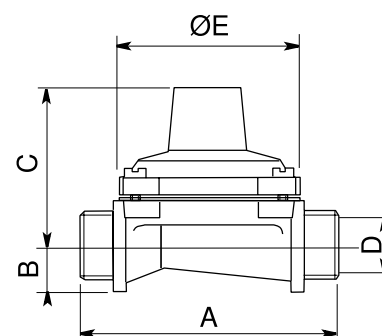
Technical description

DN		PFA (bar)	References	Vvs-nr
"	mm			
3/4	20	4	149B7138	

- **Connection** : male/male, BSP thread
- **Casing** : chrome plated bronze
- **Permissible operating pressure PFA - water** : See table
- **T°** : Mini. -10 °C
Maxi. 80 °C
- **Medium** : water
- **Approvals** : ACS (France)
- **Normes construction internationales** : Thread connection NF EN ISO 228

Overall dimensions

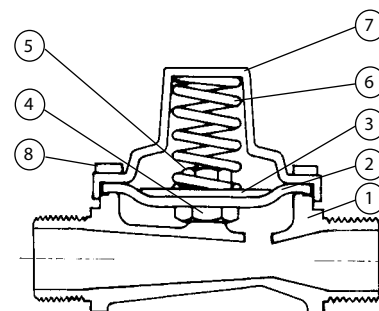
DN	D		A	B	C	E	Weight
	"	mm	mm	mm	mm	mm	kg
20	3/4	20/27	100	18	61	72,5	0,75



Technical data sheet Type 21- Domestic water hammer arrestors

Spare parts list and materials

Nb	Description	Material	EURO	ANSI
1	CASING	Chrome plated Bronze	CuSn5Zn5Pb5-C	ASTM B 505
2	MEMBRANE	NBR (polyamide reinforced)		
3	MEMBRANE RING	Brass	CuZn39Pb3	ASTM B 124
4	SCREW	Stainless steel	X5CrNi18-10	AISI 304
5	NUT	Stainless steel	X5CrNi18-10	AISI 304
6	SPRING	Anti corrosion treated steel	VD Cr Si	
7	CAP	Brass	CuZn39Pb3	ASTM B 124
8	SCREW	Stainless steel	X5CrNi 18-10	AISI 304



Socla can accept no responsibility for possible errors in catalogue, brochures and other printed material. Socla reserve the right to alter its products without notice. This also applies to products already agreed. All trademarks in this material are the property of the respective companies. All right reserved.

Socla SAS

365 rue du lieutenant Putier
71530 VIREY LE GRAND
Postal address : BP 10273
71107 CHALON SUR SAONE Cedex

Tel : 33 3 85 97 42 52
Fax : 33 3 85 97 97 42
<http://www.socla.com>
e-mail: commerfr@socla.com