

# 207

Non-return valves with membrane  
System M

## Technical Data Sheet



## Description

These valves are designed for installations that generate significant water hammer. They are very reliable and quiet (no mechanical moving parts, anti-incrustation closing system and seat). Ideal for booster pumps, sprinkler systems, motor or electric pump units and compressed air circuits. Alternating operation.

- Operates in any position
- Minimum head loss
- Does not generate hammering, very silent
- Closing system : flexible membrane (thick elastomer disc) held in its center on a metal seat consisting of a grid (flow equivalent to the nominal section),
- Sealing ensured by self-closing membrane
- On membrane check valves, the opening regulated by the elasticity and the thickness of the membrane is very progressive and can be obtained as a result of a few centimeters of W/C. Because of this, this check valve is particularly suitable for variable flow pumps and pulsatory operation.



## 207

Non-return valves with membrane - System M

DN	PFA in bar	PS in bar				Cat.	Ref.	Weight Kg
		L1	L2	G1	G2			
3/8	12/17	16	16	16	16	4.3	<b>149B2019</b>	0,15
1/2	15/21	16	16	16	16	4.3	<b>149B2100</b>	0,85
3/4	20/27	16	16	16	16	4.3	<b>149B2101</b>	0,85
1	26/34	16	16	16	16	4.3	<b>149B2102</b>	1,30
1 1/4	33/42	16	16	16	16	I	<b>149B2103</b>	1,60
1 1/2	40/49	16	16	16	16	I	<b>149B2104</b>	2,60
2	50/60	16	16	16	16	I	<b>149B2105</b>	4,00
2 1/2	66/76	16	16	15	16	I	<b>149B2106</b>	6,40
3	80/90	16	16	16	16	I	<b>149B2107</b>	12,00

### Important notice :

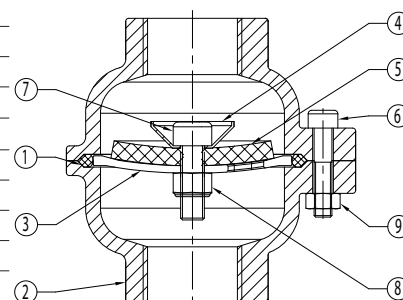
The indicated pressure for the different categories of fluids (L1/L2/G1/G2) is under no condition a guarantee of use. Therefore, it is essential to validate the use of products under given operating conditions.

### Technical features

Operating temperature	-10 °C at 60 °C
Permissible operating pressure (PFA) in water	See table above
Maximum permissible pressure (PS) other mediums	See table above
Connection	Female/Female (BSP)
Mediums	Clear liquids, gas

### Nomenclature and materials

N°	Description	Materials	EURO	ANSI
1	O-ring	EPDM		
2	Body	Aluminium	EN AC-AISI7Mg0.3	
	DN 3/8"	Cast iron/Epoxy	EN-GJL-250	ASTM A 48 35 B
3	Seat	Aluminium		
	DN 3/8"	Stainless steel	CB7Cu-1	
	DN 1/2" at 3"			
4	Cupel	Aluminium	EN AW-AlCu4MgSi	
	DN 3/8"	Stainless steel	X6Cr17	AISI 430
	DN 1/2" at 2"1/2			
	DN 3"	Brass	CuZn39Pb3	
5	Membrane	NR		
6	Screw	Stainless steel	X5Cr-Ni18-10	AISI 304
7	Screw	Stainless steel	X5Cr-Ni18-10	AISI 304
8	Bolt	Stainless steel	X5Cr-Ni18-10	AISI 304
9	Bolt	Galvanised steel		



## Approvals

**ACS** (except DN 3/8) **CE** PED 2014/68/UE  
CPR 305/2011/UE



### International construction Standards :

CE conformity directive 2014/68/UE

Thread connection NFE 03-005 ISO228

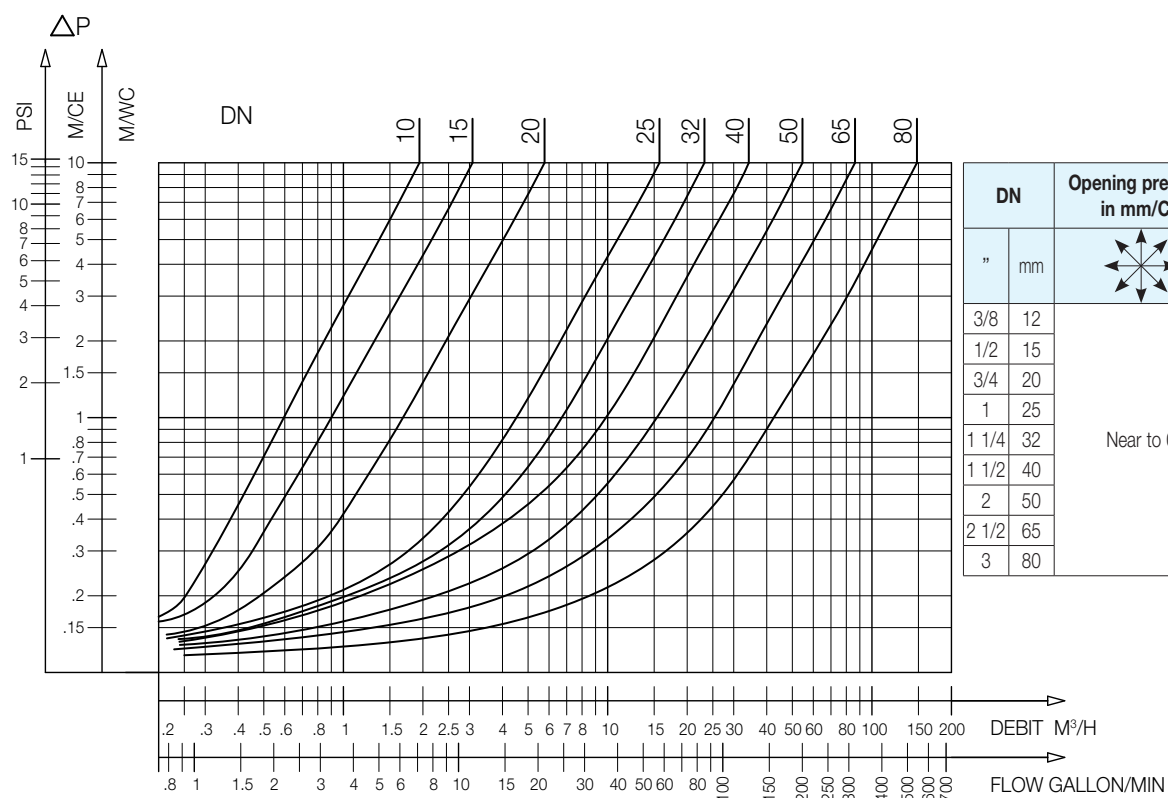
## Application

Booster pumps, compressed air circuits, vacuum pumps.

## Operation

### Direction for use :

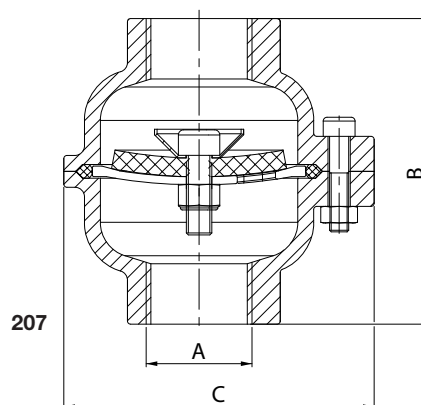
- Solid line: Valve completely open



207 - Headloss chart

## Sizing

A		B	C
"	mm	mm	mm
3/8	12/17	67,5	60
1/2	15/21	86	88
3/4	20/27	86	88
1	26/34	96	97,5
1 1/4	33/42	100	107,5
1 1/2	40/49	132	123,5
2	50/60	172	139,5
2 1/2	66/76	196	170
3	80/90	234	214



The descriptions and photographs contained in this product specification sheet are supplied by way of information only and are not binding.

Socla reserves the right to carry out any technical and design improvements to its products without prior notice. Warranty : All sales and contracts for sale are expressly conditioned on the buyer's assent to Socla terms and conditions found on its website at [www.socla.com](http://www.socla.com). Socla hereby objects to any term, different from or additional to Socla terms, contained in any buyer communication in any form, unless agreed to in a writing signed by an officer of Socla.



**A WATTS Brand**

**Socla sas**

365 rue du Lieutenant Putier • 71530 Virey-Le-Grand • France

Tel. +33 03 85 97 42 00 • Fax +33 03 85 97 42 42

[contact@wattswater.com](mailto:contact@wattswater.com) • [www.socla.com](http://www.socla.com)

ISO 9001 version 2015 / ISO 18001