

## Technical data sheet

# Type 11 and 11RC

## Pressure reducing valve

**Desbordes**

### Applications and special features



- Control and maintain the downstream pressure at an adjustable reduced value, whether there is a flow or not.
- Keep an outlet pressure at a constant value, even with variation of the upstream pressure (the down-stream pressure cannot vary more than 10 % of the variation of the upstream pressure, according to the Standard).
- No maintenance required, not affected by scale or dirt.
- Can be installed in any position.
- Guarantee a high flow rate at a constant outlet pressure because of low head loss.
- Work as pressure reducing valve (standard terminology) as well as "regulator" and as "pressure regulating valve" (when applies for gas).
- Downstream setting : 1bar to 5,5 bar; indicative value according to EN1567
- Supplied pre-set at 3 bar
- 1/4" pressure gauge connection and drain on both sides of the casing.
- Also available with compensating spring : type 11 RC, for lower downstream pressure. (DN 15 and 20mm)

### Technical description

DN		PFA (bar)	PS (bar)				Cat.	References	Vvs-nr
"	mm		L1	L2	G1	G2			
1/2	15	25	25	25	X	25	3.3	149B7054	
3/4	20	25	25	25	X	25	3.3	149B7055	
1"	25	25	25	25	X	25	3.3	149B7489	
1"1/4	32	25	25	25	X	25	3.3	149B7548	
1"1/2	40	25	25	25	X	25	3.3	149B7567	
2"	50	25	25	25	X	25	3.3	149B7565	

#### Type RC

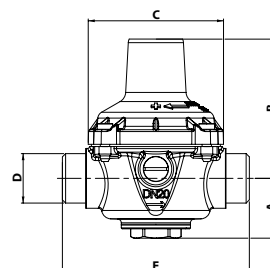
1/2	15	25	25	25	X	25	3.3	149B7068	
3/4	20	25	25	25	X	25	3.3	149B7069	

L1, L2, G1 and G2 correspond to liquids/gas classified into degree of danger according to the Pressure Equipment Directive (PED). The article 3.3 applies to equipments with no CE marking.

- Connection : male/male (BSP)
- Downstream pressure gauge connection : 1/4"
- Permissible operating pressure PFA - water : See table
- Maximum permissible pressure PS - other mediums : See table
- $\theta$  : Mini. -10 °C  
Maxi. in permanent service: 80 °C  
(40°C domestic fuel oil)
- Mediums : water, air and neutral gas , domestic fuel oil.
- Approvals : ACS - : Type 11 DN 15 - 25  
 : (11bis DN 15 - 20) - **WRAS**
- International construction Standards :  
Pressure reducing valves EN 1567  
Thread connection NF EN ISO 228

### Overall dimensions

DN	D		A	B	C	E	Weight
	"	mm	mm	mm	mm	mm	kg
15	1/2	15/21	31	60	59	85	0,7
20	3/4	20/27	32	75	73	100	0,9
25	1"	26/34	40	102	94	122	2
32	1"1/4	33/42	51	179	104	132	3,9
40	1"1/2	40/49	46	185	104	132	5
50	2"	50/60	54	194	104	146	5,3

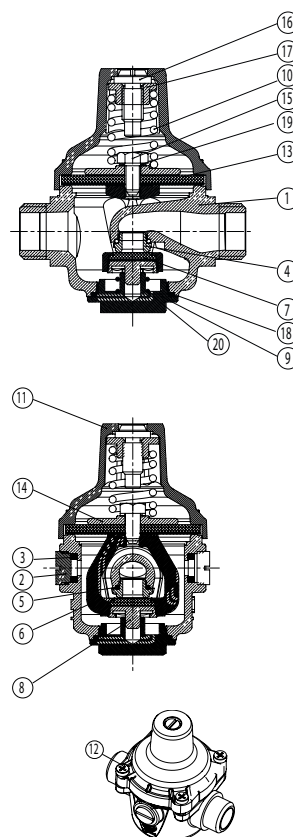


## Technical data sheet      Type 11 and 11RC - Pressure reducing valve

### Spare parts list and materials

Nb	Description	Material	EURO	ANSI
1	CASING	bronze	CuSn5Zn5PB5-C	ASTM B 505
2	PRESSURE GAUGE CAP	Brass	CuZn39Pb3	ASTM B 124
3	SEAL	NBR (Nitrile)		
4	SEAT	Stainless steel	X8CrNiS18-09	AISI 303
5	O-RING	NBR (Nitrile)		
6	STIRRUP DN 15 - 25 mm DN 32 - 50 mm	Brass	CuZn40PB2 CuAl9	
7	FLAT SEAL	NBR (Nitrile)		
8	GUIDE PLATE	Brass	CuZn39Pb3	ASTM B 124
9	CAP COVER	Brass	CuZn39Pb3	ASTM B 124
10	SPRING	Anticorrosive steel	VD CrSi	
11	CAP	Brass	CuZn40PB2	ASTM B 124
12	SCREW	Stainless steel	X5CrNi 18-10	AISI 304
13	MEMBRANE	NBR/Polyamide		
14	PLATE	Brass	CuZn39Pb3	ASTM B 124
15	MEMBRANE SCREW	Stainless steel	X5CrNi 18-10	AISI 304
16	ADJUSTING SCREW	Brass	CuZn39Pb3	ASTM B 124
17	NUT FOR SPRING PRESSING	Brass	CuZn39Pb3	ASTM B 124
18	O-RING	NBR (Nitrile)		
19	COPPER WASHER	Copper		
20*	COMPENSATING SPRING	Stainless steel	X10CrNi18-08	AISI 302

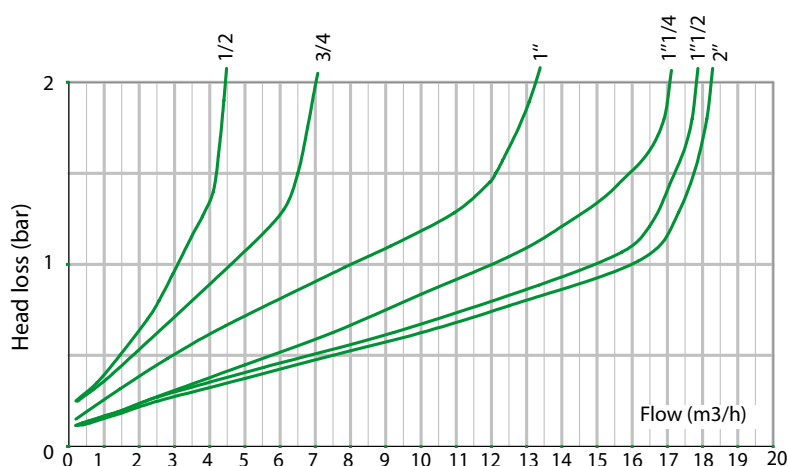
\* Type 11RC only (DN 15 and 20 mm)



### Working principle

DN (mm)	Kv	Q max	Q at 2m/s
15	3	5	1.6
20	4.5	8	2.8
25	8	14	3.6
32	12	18	5.8
40	15	18	9.1
50	16	18	14.2

Kv : Flow in m<sup>3</sup>/h when the outlet pressure becomes 1 bar lower than its setting at zero.



Setting data : upstream 8 bar/downstream 3 bar

Socla can accept no responsibility for possible errors in catalogue, brochures and other printed material. Socla reserve the right to alter its products without notice. This also applies to products already agreed. All trademarks in this material are the property of the respective companies. All right reserved.

### Socla SAS

365 rue du lieutenant Putier  
71530 VIREY LE GRAND  
Postal address : BP 10273  
71107 CHALON SUR SAONE Cedex

Tel : 33 3 85 97 42 52  
Fax : 33 3 85 97 97 42  
<http://www.socla.com>  
e-mail: [commerfr@socla.com](mailto:commerfr@socla.com)